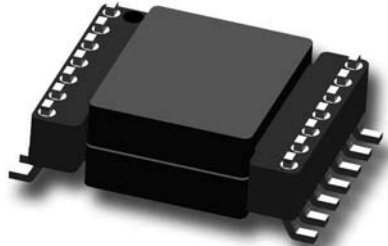


# DC-DC SERIES: P015

## Third generation of planar transformers

### Features

- High power planar transformer for DC/DC converter.
- According UL1950 / EN60950.
- UL 94V0 material.
- Storage temperature from -20°C to 130°C.
- Operating temperature -20°C to 85°C.
- Power up to 20W.



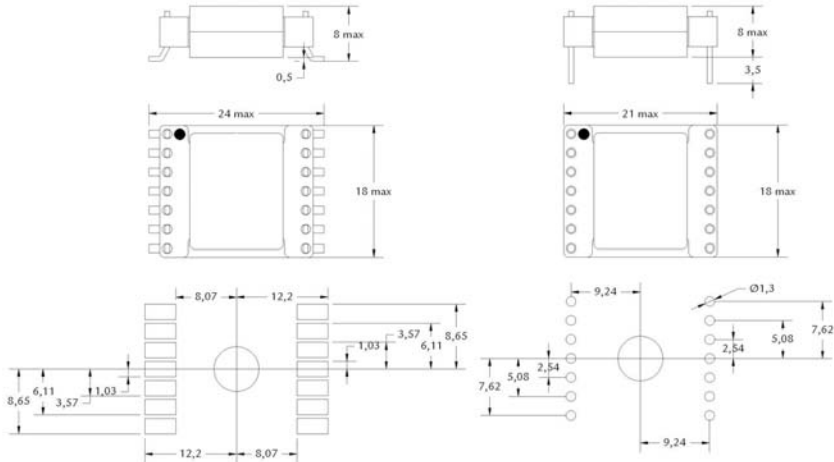
### Electrical specifications

| Part Number | Input Voltage Vdc (V) | Output Voltage (V) | Output Current (A) | Power (W) | Frequency (kHz) | Duty cycle | Topology | Inductance (μH±25%) | Typ Leakage Inductance (μH) | Turns Ratio (Pri:Sec) | Max Total losses (W) |
|-------------|-----------------------|--------------------|--------------------|-----------|-----------------|------------|----------|---------------------|-----------------------------|-----------------------|----------------------|
| P015FW1CX1  | 36-72                 | 1,5                | 13                 | 20        | 400             | 0,46       | Forward  | 263,6               | 0,7                         | 10:1                  | 0,4                  |
| P015FW1CX2  | 36-72                 | 3,3                | 6                  | 20        | 400             | 0,43       | Forward  | 213,5               | 0,7                         | 9:2                   | 0,4                  |
| P015FW1CX3  | 36-72                 | 5                  | 4                  | 20        | 400             | 0,43       | Forward  | 213,5               | 0,7                         | 3:1                   | 0,4                  |

### Notes

Replace X by S for SMD application and P for PTH application.

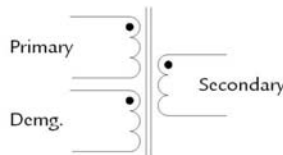
### Dimensions



Recommended PCB layout

Recommended PCB layout

### Schematics



FORWARD